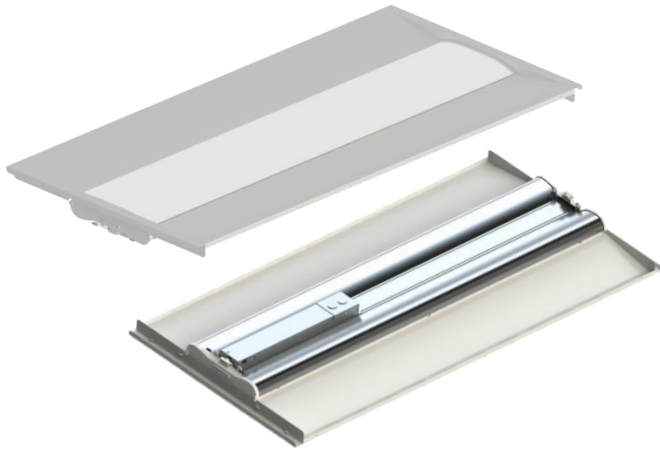


# BT14 (2x4) 24W & 32W Series



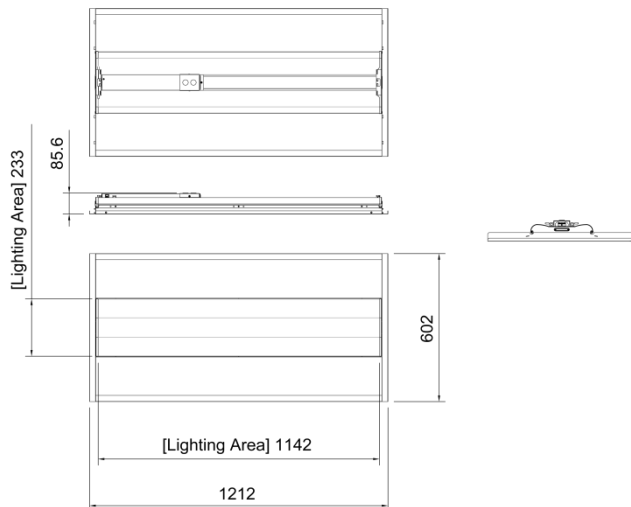
## Product Description

- System Input Power: 24W, 32W
- Efficacy: 119.2 lm/W
- Input Frequency: 50/60Hz

## Product Specification Options:

- **DM/ZT - 0~10 Volt Dimming**
- **SKCT – Color Tuning**

## Dimensions



## Control Options:

BT14 series can be controlled with standard 0-10V LED dimmers. Tested 0-10V LED Dimmers include:

- Lutron – DIVA
- WattStopper - DLM

## SKCT – Color Tuning

- BT Smart System is an advanced tunable office lighting system that can provide daylight simulation between 2,700K to 6,500K, while dynamically interacting with both occupancy and photo sensors.

Performance	BT14-024ZT-R4	BT14-032ZT-R4
Luminous Flux(lm)	2896.97 lm	3747.79 lm
Power Consumption	24W	32W
Power factor	> 0.9	> 0.93
Efficacy(lm/W)	119.2 lm/W	119.2 lm/W
CCT(K)	3000K / 4000K / 5000K 2700K ~ 6500K	
CRI(Ra)	85.3	87.8
Beam Angle(°)	110	
Input Voltage(V)	100 - 277Vac	
Operating Temp	-20°C~45°C	

※ Tolerance Range : ± 10%

## Physical Info

Dimension (in)	44.72" x 23.7" x 3.37"
Luminous active(mm)	44.9" x 9.7"
Weight	< 16.9 lbs.

## Certification & Qualification



## ORDERING INFORMATION

BT	14	-032	SM	40	R4
Model	Light Panel Size	Wattage	Control Option	CCT	Mounting
BT Troffer	1' x 4'	024 24 Watt 032 32 Watt	SK Smart Kelvin control DM/ZT 0-10V Dimming	CT Tunable (SK Only) 30 3000K 40 4000K 50 5000K	R4 Recessed 2x4 P Pendant

U.S. Sales Partner ~  
Controlled Lighting Corp.  
NY – 914-806-6684 ~ CA – 415-935-1346  
[sales@controlledlighting.net](mailto:sales@controlledlighting.net)

SAMJIN LED Inc.  
900 Lane Avenue, Suite 170, Chula Vista, CA 91914  
[lighting@samjinled.com](mailto:lighting@samjinled.com)

Rev. 3/1/18  
Specifications subject  
to change without  
notice.

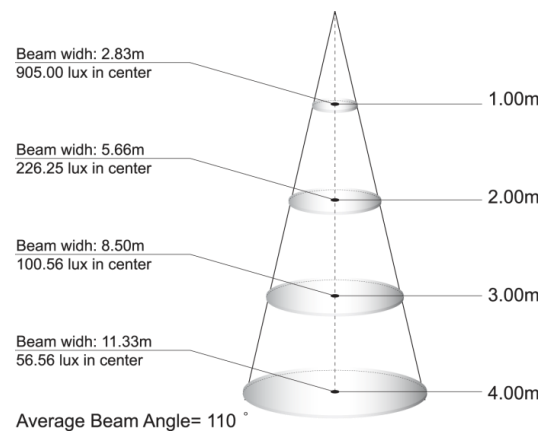
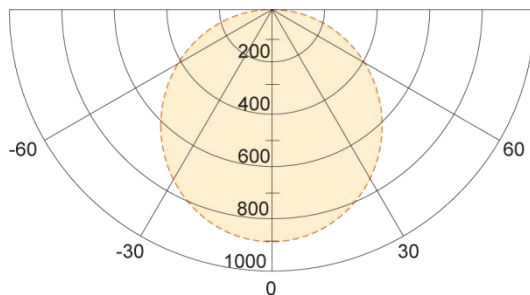
### Luminous Intensity Table

$\theta/\Phi$	0°	30°	60°	90°
0°	905	905	905	905
15°	867	867	865	864
30°	757	755	750	748
45°	590	588	581	578
60°	390	387	377	374
75°	207	194	162	154
90°	2	2	2	2

### Luminous Flux Table

Cone	Lumens	Luminaire %
0°~32.5°	802	32
32.5°~62.5°	1272	50
62.5°~90°	462	18
0~90°	2535	100
90°~180°	0	0
0°~180°	2535	100

### Light Distribution & Distance Luminary – BT14-024ZT/SD-R4



## ZONAL LUMEN SUMMARY

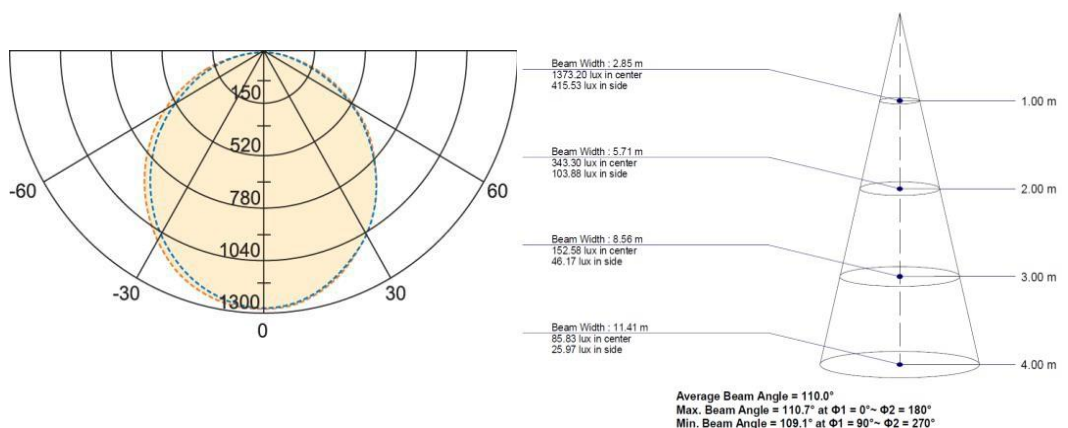
Zone	Lumens	% Lamp	Luminaire
0-30	1,218	32	32
30-60	1,938	50	50
60-90	685	18	18
0-90	3,840	100	100

## COEFFICIENTS OF UTILIZATION

RC	90				70				50			0
	RW	60	50	30	10	60	50	30	10	50	30	10
<b>RCR (0)</b>	1.10	1.10	1.10	1.10	1.08	1.08	1.08	1.08	1.05	1.05	1.05	1.00
<b>1</b>	1.00	0.98	0.94	0.91	0.97	0.95	0.92	0.89	0.93	0.90	0.88	0.84
<b>2</b>	0.90	0.86	0.80	0.75	0.87	0.84	0.78	0.74	0.82	0.77	0.73	0.69
<b>3</b>	0.81	0.76	0.69	0.63	0.78	0.74	0.67	0.62	0.72	0.66	0.61	0.58
<b>4</b>	0.73	0.68	0.60	0.53	0.71	0.66	0.59	0.53	0.64	0.58	0.52	0.50
<b>5</b>	0.67	0.61	0.53	0.46	0.64	0.59	0.52	0.46	0.58	0.51	0.45	0.43
<b>6</b>	0.61	0.55	0.47	0.40	0.59	0.54	0.46	0.40	0.52	0.45	0.40	0.37
<b>7</b>	0.56	0.50	0.42	0.36	0.54	0.49	0.41	0.35	0.48	0.40	0.35	0.33
<b>8</b>	0.52	0.46	0.38	0.32	0.50	0.45	0.37	0.32	0.44	0.37	0.31	0.29
<b>9</b>	0.48	0.42	0.34	0.29	0.46	0.41	0.34	0.28	0.40	0.33	0.28	0.26
<b>10</b>	0.45	0.39	0.31	0.26	0.43	0.38	0.31	0.26	0.37	0.30	0.26	0.24

**CR = Room Cavity Ratio**  
**RC = Effective Ceiling Cavity Reflectance** *RW*  
 = Wall Reflectance

## LIGHT DISTRIBUTION & DISTANCE LUMINARY



## SAMJIN LED BT Luminaire With an integral Emergency Battery Kit

### FEATURES

SAMJIN LED Flat Panel recessed troffer luminaire with an integral **Philips Bodine Emergency LED Driver (BSL17C)** is configured with a 90-minute Battery Pack, compliant with the NFPA 101 Life Safety Code

### Operation

When AC power fails, it immediately switches to the emergency mode, operating the LEDs for 90 minutes. When AC power restored the emergency driver automatically returns to normal mode.  
Recharge Time: 24Hrs.  
Warranty: 5 years

### Emergency LED Driver (BSL17C)

#### Performance Summary

Delivered Light Output: 1300 (PLUS) lumens  
Input Voltage: 120-277VAC  
Input Current: 60 [Hz]  
Input Power: 3.0 W  
Output Voltage:  $V_o = 30\sim 80$  [VDC]  
Output Current:  $I_o = 200$ [mA] (Max)  
Output Power: 7.0 W (Max)

### Battery Sustainability Time

Illumination Time: 90 minute or more  
Recharge Time: 24Hrs.  
Test Switch: Indicator

### Certification

UL 924 Issue:2006/02/24 Ed:9 Rev:2011/02/18  
UL Standard for Safety Emergency Lighting and Power Equipment  
CSA C22.2#141 Issue:2010/09/01 Ed:4 Unit Equipment for Emergency Lighting)



### Ordering Information

Reference SAMJIN Troffer specsheets for ordering details.