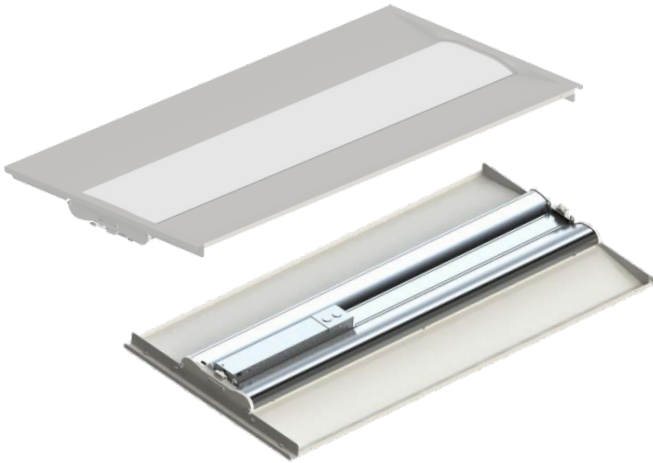


BT24 (2x4) 30W & 40W Series



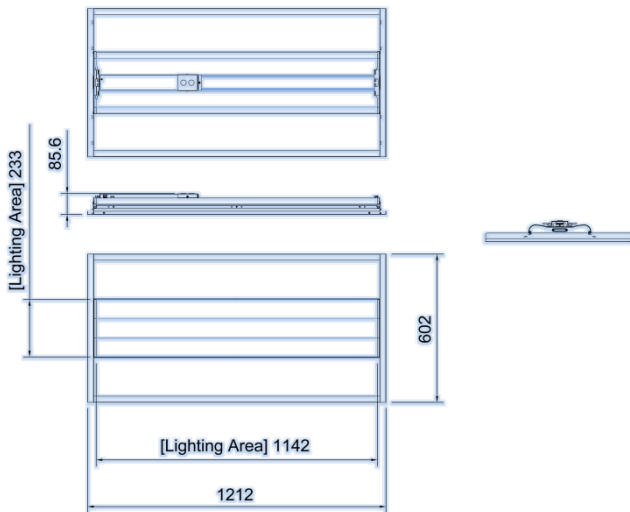
Product Description

- System Input Power: 30W, 40W
- High Efficacy: 127 lm/W
- Input Frequency: 50/60Hz
- Classification: DLC Premium

Control:

ZT - 0~10 Volt Dimming

Dimensions



Control:

BT24 series can be controlled with standard 0-10V LED dimmers. Tested 0-10V LED Dimmers include:

- Lutron – DIVA
- WattStopper - DLM

Performance	BT24-030ZTSUS	BT24-040ZTSUS
Luminous Flux(lm)	3951 lm	4968 lm
Power Consumption	30W	39W
Power factor	> 0.9	
Efficacy(lm/W)	126.9 lm/W	127.6 lm/W
CCT(K)	5000K	
CRI(Ra)	> 86.9	
Beam Angle(°)	110	
Input Voltage(V)	100 - 277Vac	
Operating Temp	-20°C~45°C	

※ Tolerance Range : ± 10%

Physical Info	
Dimension (in)	44.72" x 23.7" x 3.37"
Luminous active(mm)	44.9" x 9.7"
Weight	< 16.9 lbs.

Certification & Qualification



Only DLC Listed are:
BT14-032 (32W)

ORDERING INFORMATION

BT	24	-040	ZT	50	SUS
Model	Light Panel Size	Wattage	Control Option	CCT	Mounting
BT Troffer	2' x 4'	030 30 Watt 040 40 Watt	ZT 0-10V Dimming	50 5000K	SUS Standard US Recessed

SAMJIN LED Beetle Luminaire With an integral Emergency Battery Kit

FEATURES

SAMJIN LED Flat Panel recessed troffer luminaire with an integral **Philips Bodine Emergency LED Driver (BSL17C)** is configured with a 90-minute Battery Pack, compliant with the NFPA 101 Life Safety Code

Operation

When AC power fails, it immediately switches to the emergency mode, operating the LEDs for 90 minutes. When AC power restored the emergency driver automatically returns to normal mode.
Recharge Time: 24Hrs.
Warranty: 5 years

Emergency LED Driver (BSL17C) Performance Summary

Delivered Light Output: 1300 (PLUS) lumens
Input Voltage: 120-277VAC
Input Current: 60 [Hz]
Input Power: 3.0 W
Output Voltage: $V_o = 30\sim 80$ [VDC]
Output Current: $I_o = 200$ [mA] (Max)
Output Power: 7.0 W (Max)

Battery Sustainability Time

Illumination Time: 90 minute or more
Recharge Time: 24Hrs.
Test Switch: Indicator

Certification

UL 924 Issue:2006/02/24 Ed:9 Rev:2011/02/18
UL Standard for Safety Emergency Lighting and Power Equipment
CSA C22.2#141 Issue:2010/09/01 Ed:4 Unit Equipment for Emergency Lighting)



Ordering Information

Reference SAMJIN Troffer specsheets for ordering details.